



Model 732A Short-Stop Probe

GENERAL DESCRIPTION

The Model 732A "Short-Stop" probe was designed for those tricky and difficult applications where conductive coatings or product buildups cause erroneous control action. The "driven element" section of the probe along with the advanced circuitry techniques of the instrument provide a system that is completely reliable in those troublesome applications. The Model 732A is recommended for ON/OFF applications such as Latex paint, molasses, acids, moist powder or granular products, etc.

The Model 732A can be used with the Model 5100 Level-Lance instrument. This unit has the necessary circuitry incorporated to utilize the capabilities of the Model 732A probe.

The Short-Stop probe is primarily designed for horizontal mounting at the desired trip point (control point). If vertical (top) mounting is required because of vessel geometry, the "trip" point can only be set at the tip of the probe. The instrument cannot be adjusted to obtain a trip point somewhere along the length of the probe.

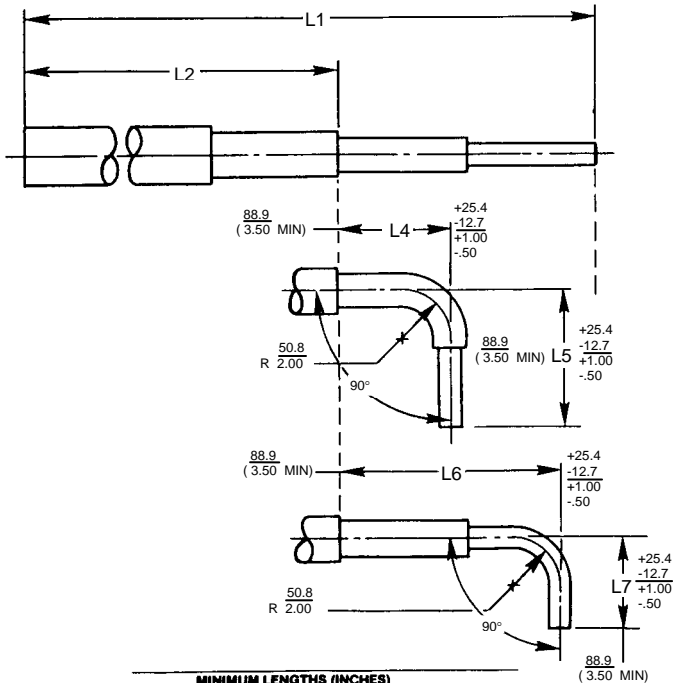
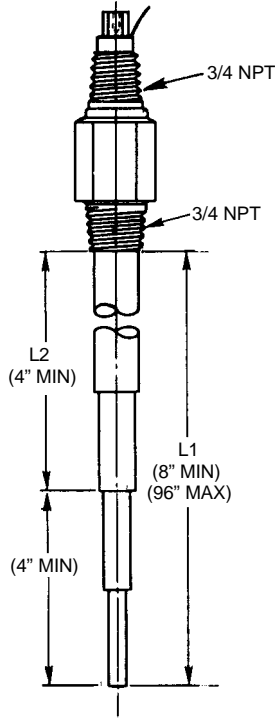
This probe, the Model 732A, is designed for use in applications where the temperature does not exceed 350°F. For applications above that temperature limit, see the Robertshaw Model 727A High Temperature "Short-Stop" probe.

SPECIFICATIONS

Pressure/Temperature Rating	1000 psi @ 100°F. Derated to 0 psi @ 350°F. Rated for vacuum service (100°F. max.)
Probe Rod Material	316 stainless steel
Insertion Length	8" minimum
Short-Stop element length	4" minimum
Probe Mounting Size	3/4" NPT
Probe Rod Diameter	0.359"
Gland and Sheath Material	316 St. St.
Insulation Material (between elements)	Teflon



DIMENSIONS



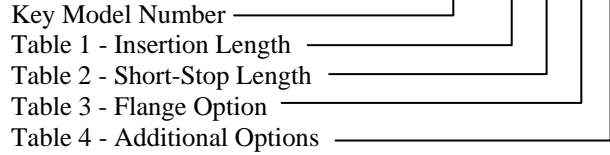
MINIMUM LENGTHS (INCHES)						
L1	L2	L4	L5	L6	L7	Bend Radius
8.00	4.00	3.50	3.50	3.50	3.50	2"

Customer to specify L4 & L5 or L6 & L7. L1 & L2 are specified in Model number.

ORDERING INFORMATION

Specify complete model number according to the tables below.

732A-xx-xx-N 0



KEY MODEL NUMBER

Model No.	Description
732A	Special purpose rigid capacitance probe for use with Robertshaw models 318A and 5100 instruments, in difficult ON-OFF applications.

Table 1 - INSERTION LENGTH (L1)

Desig.	Description
xx	Overall insertion length of the probe. The minimum insertion length is 8". The maximum is 96". SPECIFY LENGTH IN INCHES.

Table 2 - SHORT-STOP ELEMENT LENGTH (L2)

Desig.	Description
xx	Length in inches of the Short-stop element. Minimum 4". SPECIFY LENGTH IN INCHES.

NOTE: If the probe is installed in a nozzle, the short-stop element must extend at least four inches out of the nozzle into the vessel.

Table 3 - FLANGE OPTION

Desig.	Description
N	None
A	Flange screwed onto probe gland.
B	Flange welded onto probe gland.

NOTE: Select flange from PL-FL.

Table 4 - ADDITIONAL OPTIONS

Desig.	Description
0	None
1	Bent Probe. See Bend Dimension Table. SPECIFY BEND DIMENSIONS



Robertshaw Industrial Products
 1602 Mustang Drive
 Maryville, Tennessee 37801
 Phone: (865) 981-3100 Fax: (865) 981-3168
<http://www.robertshawindustrial.com>

Q-3837 (5/07)

Printed in U.S.A.

